

Stair Steps Lap Quilt



Description:

This quilt is made of easily pieced blocks or partial blocks that are arranged in an offset manner to achieve the pattern. The quilt is easiest to put together correctly when blocks for a color stripe are sewn to the body of the quilt in partial rows. The pictures below will illustrate that better.

This lap quilt will finish at 62" by 68".

The number of $2\frac{1}{2}$ " squares that need to be cut to make the lap quilt as shown are given below.

Fabric Requirements:

NOTE: I believe I've counted correctly the number of squares needed to make the lap quilt as above, but errors are possible. So you may need to cut a few more if these counts aren't quite enough.

Each full block unit requires 21 squares of the desired color, and 7 squares of the "Mortar".

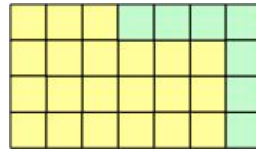
FABRICS	Yardage
Color 1 (Shown in Yellow)	162 - $2\frac{1}{2}$ " squares
Color 2 (shown in Lavendar)	151 - $2\frac{1}{2}$ " squares
Color 3 (shown in Orange)	165 - $2\frac{1}{2}$ " squares
"Mortar" and borders if all made from individual squares (shown in Green)	366 - $2\frac{1}{2}$ " squares
Binding	$\frac{1}{2}$ yard
Backing	4 yds

Note: You may also use strips for the inner and outer borders. If you choose to do so then you will need 18" for the inner border, 21" for outer border. And the number of squares needed for the "Mortar" will be - 138.

Piecing Notes:

Full Block Piecing -

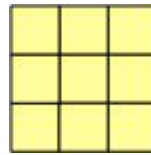
A full block in this quilt will be pieced as shown in the figure below.



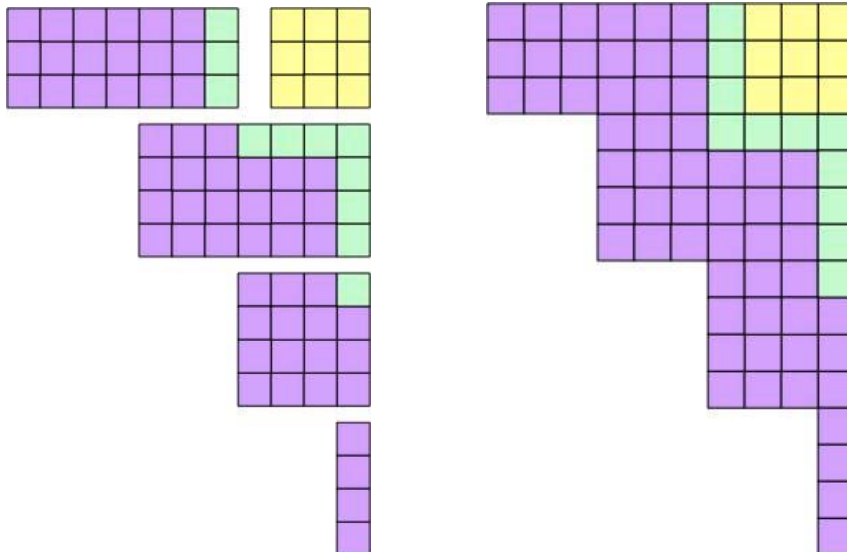
Important Assembly Instructions: Because this quilt is assembled in partial rows, the rows will be sewn together with partial seams. That is you will need to sew the rows together, making sure to leave 2"-3" unsewn at the left end of the seam in order to be able to add on the next color band for each row.

Piecing Steps:

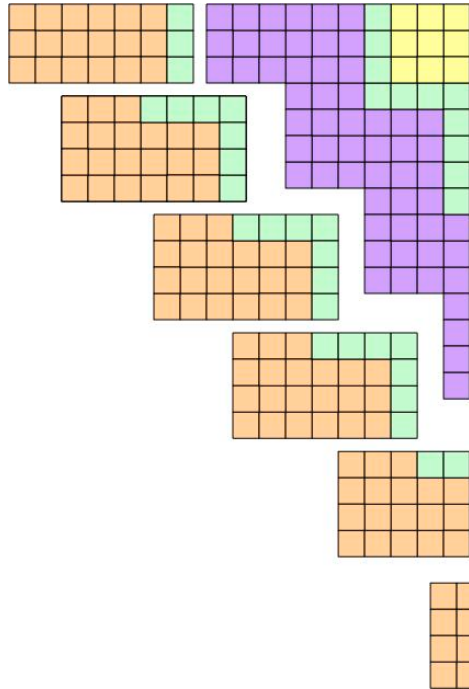
1. Color 1, first section - Take 9 Color 1 squares and sew into a 9 patch as shown in the figure below. Set aside.



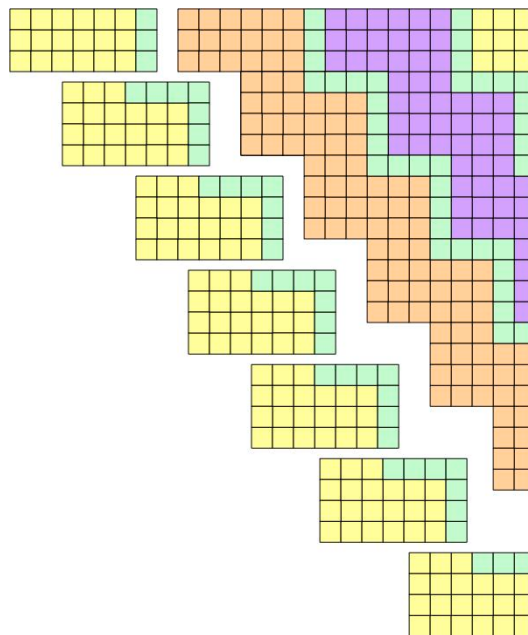
2. Color 2, first stripe - Using Color 2 squares and the "mortar" squares make 1 Full block and 3 partial blocks as shown in the figure on the left below. Make sure to alternate your seam directions when making the blocks. Sew the rows together as shown in the figure on the right below. Make sure to leave 2"-3" unsewn in the seam on the left hand side of the row. This will allow you to add the blocks for the next color band without any problems.



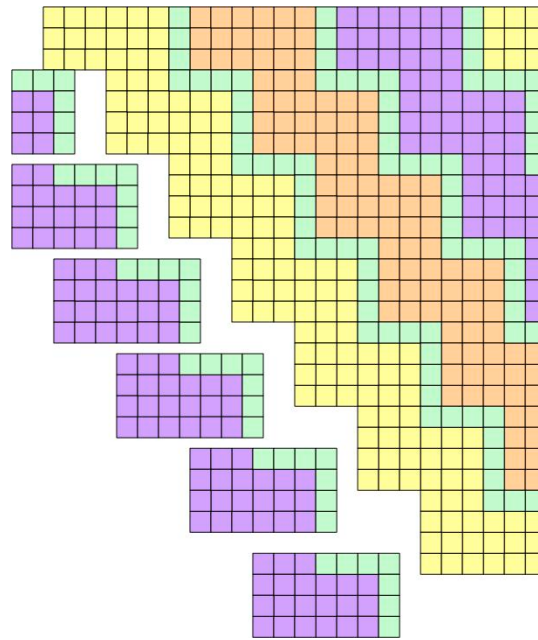
3. Color 3, first stripe - Using Color 3 squares and the "mortar" squares make 3 Full blocks and 3 partial blocks as shown in the figure on the left below. Sew the rows together as shown in the figure on the right below.



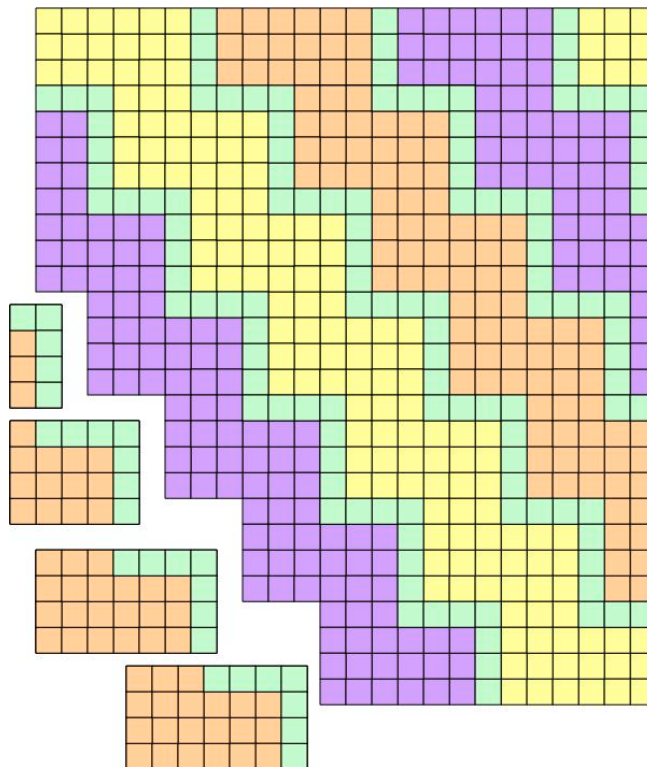
4. Color 1, second stripe - Using Color 1 squares and the "mortar" squares make 5 Full blocks and 2 partial blocks as shown in the figure on the left below. Sew the rows together as shown in the figure on the right below.



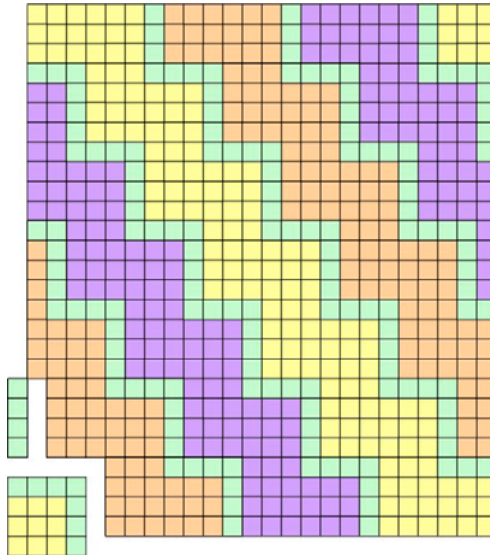
5. Color 2, second stripe - Using Color 2 squares and the "mortar" squares make 5 Full blocks and 1 partial blocks as shown in the figure on the left below. Sew the rows together as shown in the figure on the right below.



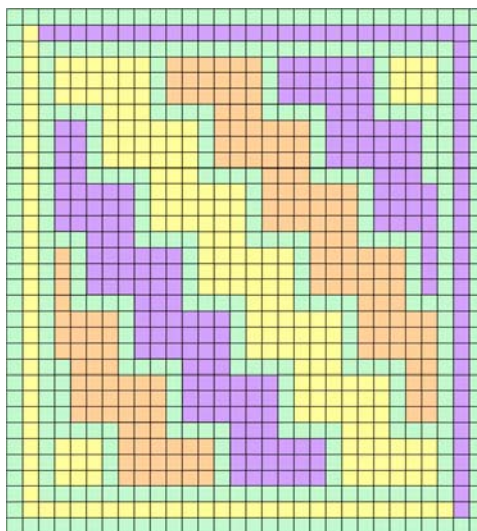
6. Color 3, second stripe - Using Color 3 squares and the "mortar" squares make 5 Full blocks and 1 partial blocks as shown in the figure on the left below. Sew the rows together as shown in the figure on the right below.



7. Color 1, Third stripe - Using Color 1 squares and the "mortar" squares make 5 Full blocks and 1 partial blocks as shown in the figure on the left below. Sew the rows together as shown in the figure on the right below.



8. Inner Border - If using squares for the inner border, make 2 strips of 27 'mortar' squares. Sew these strips to the sides of the quilt top. Make 2 strips of 26 'mortar' squares. Sew these to the top and bottom of the quilt top. If using solid fabric, then cut 2 $\frac{1}{2}$ " strips of your inner border fabric and sew to your quilt top.
9. Middle border - sew a 28-square strip and a 30-square strip from Color 1 and Color 2 squares. Sew to the quilt top as shown in the figure at the bottom of the pattern.
10. Outer Border - If using squares for the outer border, make 2 strips of 31 "mortar" squares. Sew these strips to the sides of the quilt top. Make 2 strips of 30 "mortar" squares. Sew these to the top and bottom of the quilt top. If using solid fabric, then cut 2 $\frac{1}{2}$ " strips of your outer border fabric and sew to your quilt top.
11. Quilt and bind as desired.



Note: Be sure to use a scant $\frac{1}{4}$ " seam allowance when sewing the squares together.